



Welcome to BRITA VIVREAU
VIVREAU Vitap



VIVREAU ViTap

BRITA. The total solutions provider.

BRITA provides end-to-end solutions to your drinking water needs

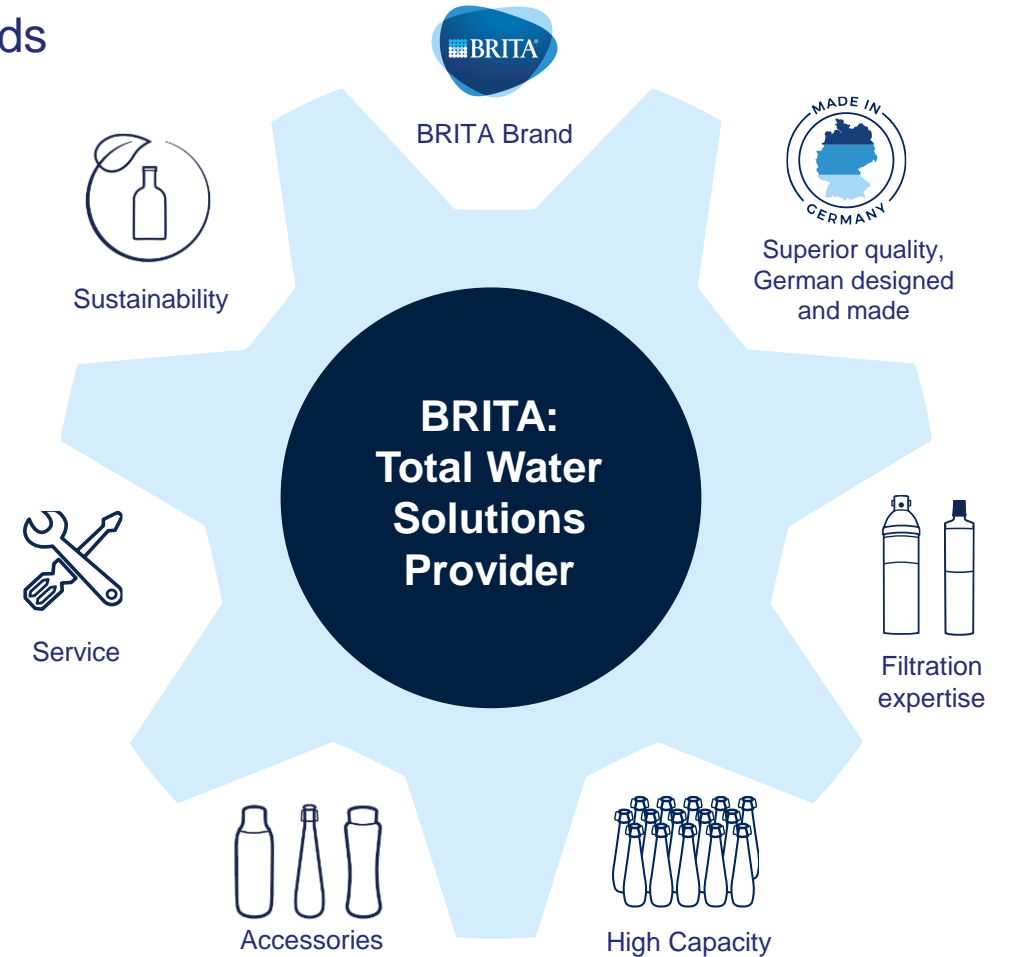
If you value quality and peace of mind, wish to eliminate single use plastics, bolster your bottom line or simply serve and enjoy great tasting water, BRITA is your partner and total solutions provider.

At BRITA, water is our passion. We have channelled over half a century's expertise into our BRITA filtration and treatment technologies, and into each and every one of our BRITA VIVREAU dispensers.

The BRITA filtration legacy guarantees great-tasting water, encompassing expert engineering to ensure expert and regional filtration.

Our products are reliable, and dependable with high-capacity dispensing capabilities allowing for consistent performance during peak periods of use.

From regional analysis of your water and installation of your dispenser, to maintenance via certified service technicians, and branded bottles BRITA is your partner and total solutions provider.



The BRITA VIVREAU ViTap

The BRITA VIVREAU ViTap is a technologically sophisticated source of premium filtered hot, chilled still and sparkling water.

The expertly-crafted, German-designed BRITA VIVREAU ViTap, is the star-attraction wherever it's displayed, however it's the BRITA filtration legacy encompassing expert engineering that ensures specialist regional filtration, and drinking water with unrivalled taste and quality.

It's reliable and dependable, with high-capacity dispensing capabilities, allowing for consistent performance during peak periods of use.

From regional analysis of your water and installation of your dispenser, to maintenance via certified service technicians, and branded bottles BRITA is your partner and total solutions provider.



VIVREAU ViTap

Dispenses hot, chilled still or sparkling water



Anti-scalding feature for hot water

Easy to use LED touch control panel

Easy-to-clean removable nozzles

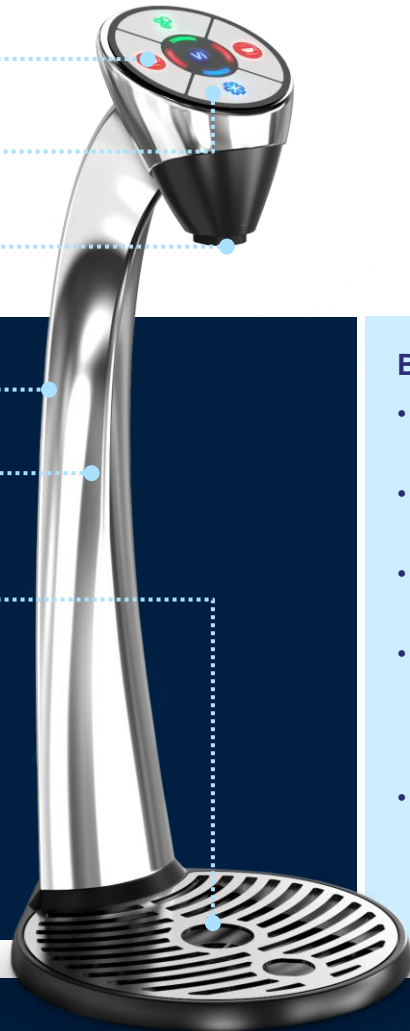
Stainless steel tap

Perfect water flow with zero splash

Drip tray with direct connection to waste water system

Ideal for e.g.

- Kitchens
- Common areas
- Staff rooms
- Breakfast buffets
- Wellness and spa areas



Benefits:

- High capacity – great for high demand peak times
- Superior dispensing capacity - 120 Litres per hour (2L per min)
- 60L per hour cooling capacity so you never run out of cool, filtered water
- Intelligent technology backed up by more than 50 years research and development reduces chlorine, limescale and other taste-impairing substances like lead and copper
- Low maintenance, refillable CO2 gas bottles, two-year warranty and ongoing maintenance from BRITA experts.

Two heights

ViTap (dispensing height: 240 mm)

ViTap Plus (dispensing height: 340 mm)



VIVREAU ViTap Technical data



Model	BRITA VIVREAU ViTap 301	BRITA VIVREAU ViTap 302	BRITA VIVREAU ViTap 304	BRITA VIVREAU ViTap 305
Design / type	Tap System			
Types of water				
Chilled still	•	•	•	•
Sparkling	-	•	-	•
Hot	-	-	•	•
Specifications				
Cooling capacity	60 l/h			
Fits into base cabinet with the following dimensions (W x H x D)	300 x 800 x 600 mm	500 x 800 x 600 mm	600* x 800 x 600 mm	800* x 800 x 600 mm
Unit dimesions under the sink (W x H x D)	210 x 440 x 360 mm (cooler)	360 x 440 x 360 mm (cooler-carbonator)	210 x 440 x 360 mm (cooler) 130 x 523 x 320 mm (boiler)	360 x 440 x 360 mm (cooler-carbonator) 130 x 523 x 320 mm (boiler)
Unit dimensions incl. drip tray (W x H x D)	ViTap standard: 138 x 325 x 165 mm ViTap Plus Upgrade Kit: 210 x 420 x 230 mm (order number: 1023678)			
Dispensing height	ViTap standard: 240 mm ViTap Plus Upgrade Kit: 340 mm (order number: 1023678)			
System weight	19 kg (cooler) 1.6 kg (tap)	39 kg (cooler-carbonator) 1.6 kg (tap)	19 kg (cooler) 7.5 kg (boiler) 1.6 kg (tap)	39 kg (cooler-carbonator) 7.5 kg (boiler) 1.6 kg (tap)
Max. power consumption	240 W	520 W	3040 W	3320 W
Max. flow rate	2 l/m 140 l/h			
Specifications: Hot water				
Dispensing capacity	-	-	3-4 cups per minute at up to 95 °C (36-48l/h)	
Boiler tank capacity	-	-	4.5L	
Product number				
	ViTap 301-G-1-TS-0 CU AU	ViTap 302-G-2-TS-0 CU AU	ViTap 304-G-1H-TS-0 CU AU	ViTap 305-G-2H-TS-0 CU AU
Item Number	1040185	1032403	1037336	1037333
JDE code (NZ)	733293	730058	730057	730056

* Minimum width. Ensure drainage is installed at rear. If installed on side panel width will need to increase to accommodate.

The food-grade quality and safety of BRITA water filter products are tested and verified by independent institutions



*applies to all materials that come into contact with water

Your high performer

Exceptional for high demand peak times

Not only does BRITA VIVREAU leading the way when it comes to expertise, technology and taste, it is also ahead of the game when it comes to capacity.

Peak times are when we shine, your office, hotel or health facility will enjoy great tasting water dispensed in consistent temperature time and time again.

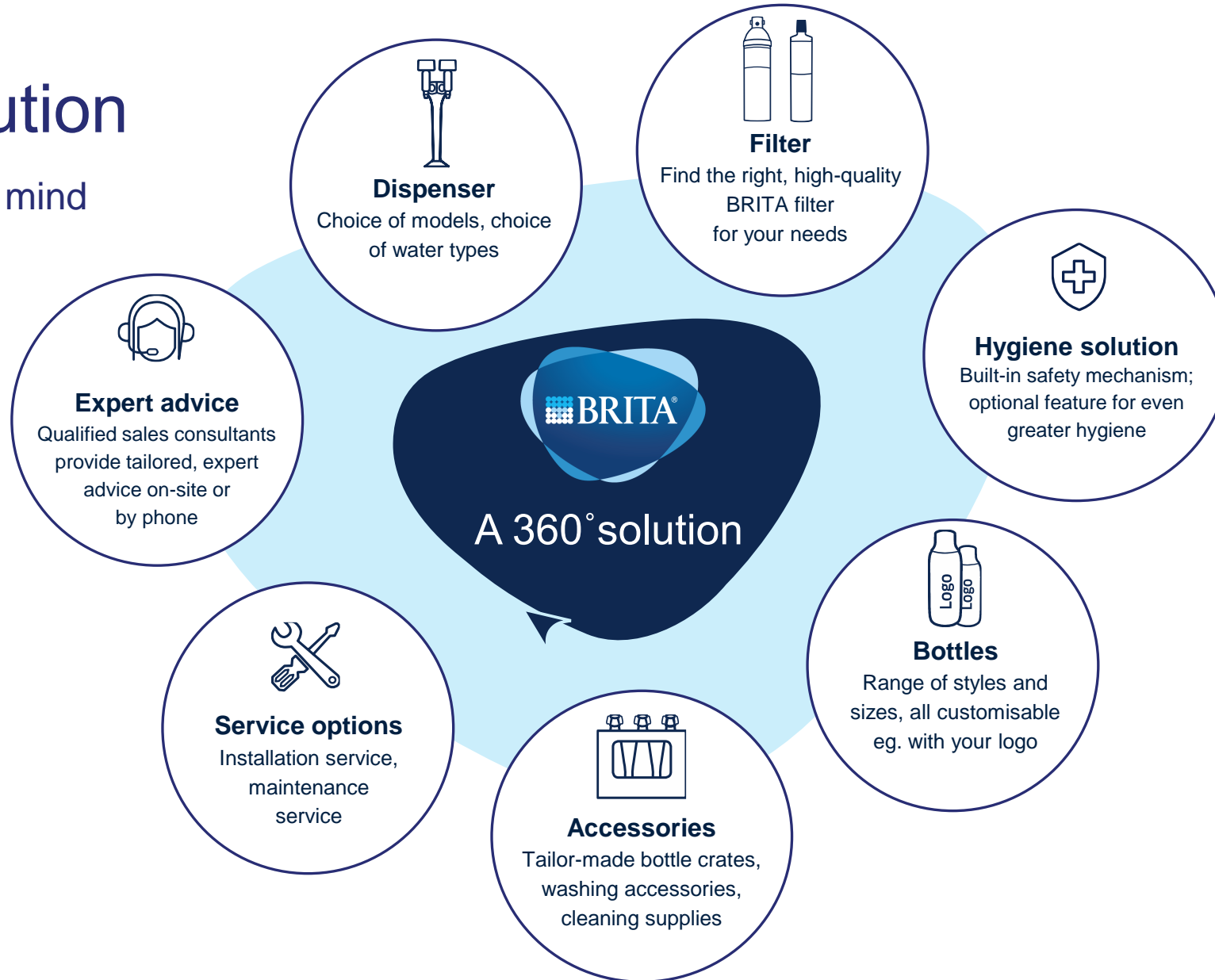
The BRITA VIVREAU Vitap has 60L per hour cooling capacity so you never run out of cool, filtered water. In fact, we double the capacity of our nearest competitor!* We do all this without compromising temperature, taste or over-loading the chiller/boiler unit.

Currently, we can be found in all Air New Zealand Koru Lounges and Qantas Business lounges across Australia and New Zealand. The high volume of daily traffic going through these spaces proves how our systems deal with high-capacity use.



A 360° solution

For total peace of mind

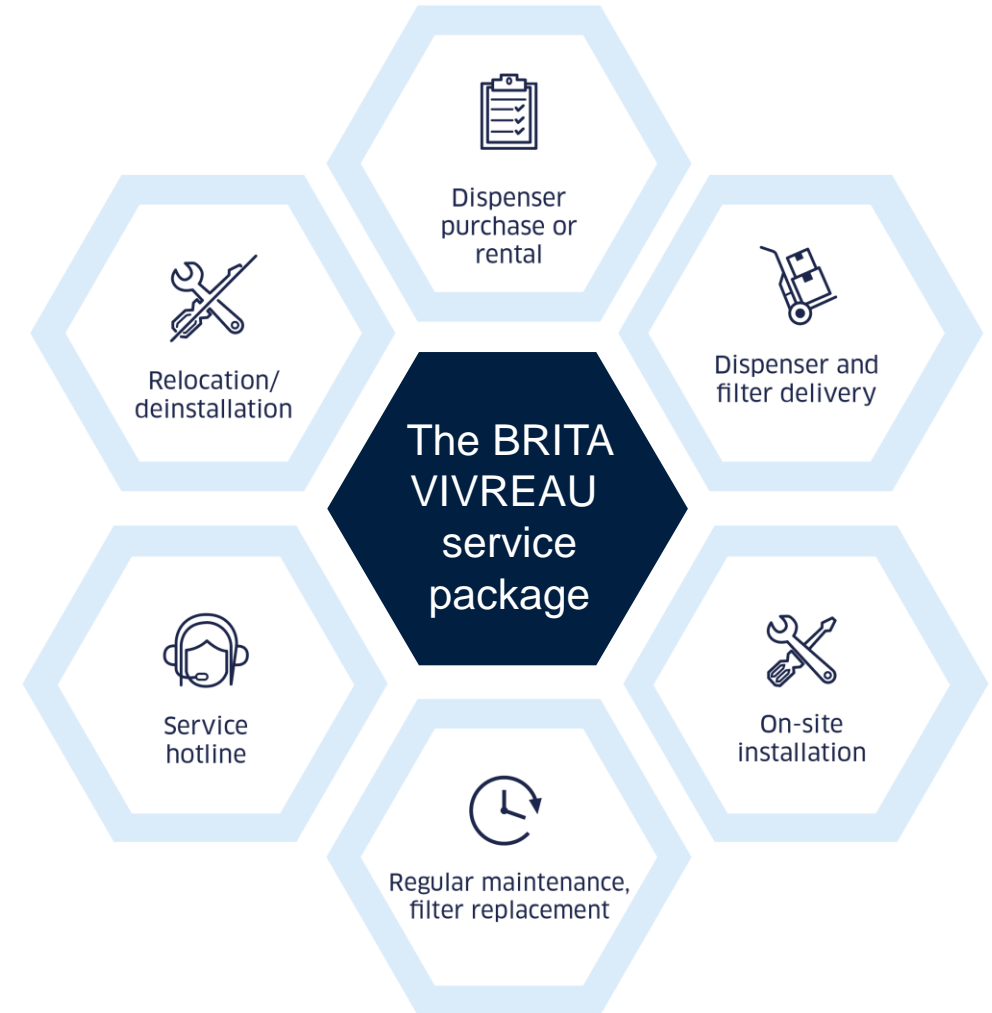


BRITA VIVREAU service package

Expert, reliable advice and assistance

Although our BRITA range of products is famously low maintenance, we do provide world-class customised service packages for your valuable source of hydration. That means any issues are seen to in no time, and that businesses can retain optimum performance of their water source resulting in complete peace of mind avoiding costly downtime and reactive maintenance costs.

These tailored and flexible service packages can include onsite installation and training through to bi-annual filter replacement and sanitisation. Along with BRITA's two-year warranty guarantee, you are always supported by a nationwide service network.



Expert Filtration Technology

Excellent water – an art and a science

To us at BRITA, water filtration is both an art and a science. With our proven filtration solutions, you can be sure we meet the highest hygiene, quality and environmental standards.

At BRITA, water is our passion. We have channelled over half a century's expertise into our BRITA filtration and treatment technologies, and into each and every one of our BRITA VIVREAU dispensers. From activated carbon to ion-exchange resins, pre-filters, post-filters, and more, you'll find effective filtration solutions for your specific needs.

Engineered to the highest quality to deliver unparalleled taste and performance, the BRITA VIVREAU's German-designed filtration system and European manufactured, provides more than just a glass of water.



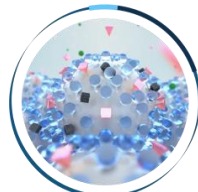
Activated carbon

Reduces substances that impair taste and odour



Ion exchanger

Reduces limescale and metals, e.g. lead



The right balance

Preserves minerals in water



It's all about the taste

Better water, enhanced well-being

The past 50 years of deep work and passion for expert filtration has ensured that BRITA has become synonymous with great tasting water.

It's not just pure tasting water that gets the BRITA treatment, even your daily cup of coffee and tea can be improved when you start with a purified base, allowing you to optimise and increase your daily hydration.

Good hydration is the basis for our body's metabolic processes and for our health. And staying hydrated is easier if water tastes good. That's why BRITA has a special department dedicated to taste.

Birgit Kohler

Head of BRITA's Organoleptic Department, certified water sommelier.



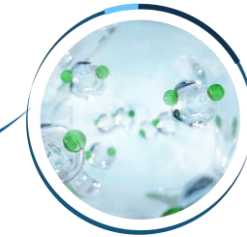
CLARITY Taste 100/100R

Water filter: Crystal clear water for cold drinks

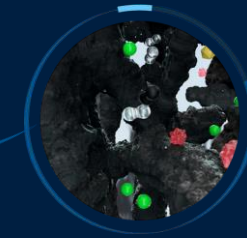
The BRITA CLARITY Taste filter, with a capacity of 11,500, powerfully unites activated carbon technology with a pre-filter. This dynamic duo preserves minerals in water while removing unwanted substances, such as microplastics and chlorine. The result is crystal-clear water with a reliably refreshing taste. What's more, the filter protects the dispenser against downtime caused by fine particles, such as rust and sand, **meaning your refreshingly filtered water can be enjoyed without interruption.**

BRITA CLARITY Taste 100 filters are compatible with:

- VIVREAU Top 50/85
- VIVREAU ViTap
- VIVREAU Bottler



The right balance
Preserves minerals in water.



Activated carbon filtration Reduces substances that impair taste and odour.



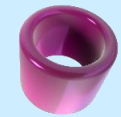
Pre-filter
Removes coarse particles.

Filter capacity:
Taste 100: 11,500 l

Perfect-tasting water
with ideal properties

Protects equipment
and therefore lowers dispenser maintenance costs

Benefits of BRITA CLARITY Taste



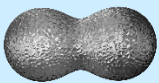
Reduces fine particles such as microplastic or sand



Reduces metals such as lead



Reduces pharmaceuticals, pesticides and hormones



Reduces chlorine taste and odour



Reduces organic impurities

CLARITY Taste 100/100R Technical data



Model	Taste 100	Taste 100R
Technology		
Water intake temperature	4°C to 30°C	
Ambient temperature for operation	4°C to 40°C	
Ambient temperature for storage/ transport	-20°C to 50°C	
Water inlet and outlet connection	CLARITY filter head JG 8mm	Everpure filter head
Operating pressure	2 bar to 8.6 bar	
Flow rate at 1 bar pressure loss	180 l/h	600 l/h
Operating flow range and associated pressure loss	40 l/h to 220 l/h 0.2 bar to 1.3 bar	40 l/h to 350 l/h 0.1 bis 0.4 bar
Nominal filter capacity	11,500 l	11,500 l
Operating position	horizontal or vertical	
Reduction performance		
Reduction of particles such as micoplastics or sand	≥ 0.5 µm (NSF 42, Class I)	≥ 2.0 µm (DIN EN 13443)
Reduction of metals such as lead	> 90 % (DIN EN 14898)	
Reduction of chlorine	> 90 % (DIN EN 14898, Class I) and > 50 % (NSF 42)	
Reduction of organic impurities such as benzene	> 90 %	
Reduces pharmaceuticals, pesticides and hormones such as naproxen, lindane, estrone	8,000 l (CLARITY Taste 100/100R)	
Dimensions (W x D x H)		
Filter system (filter head with filter cartridge)	68 x 68 x 338 mm	-
Filter cartridge	68 x 68 x 311 mm	86 x 88,6 x 317 mm
Installed dimensions (vertical installation with wall mounting bracket)	68 x 74 x 371 mm	-
Product number		
Filter cartridge (pack 1)	1020569	1033419
Filter head CLARITY (pack 1)	1024792	-
Certificates		

The food-grade quality and safety of BRITA water filter products are tested and verified by independent institutions



*applies to all materials that come into contact with water

PURITY C C300

Water filter: Excellent filtration designed for hot water dispensers

Need piping-hot water? That's no problem for PURITY C Dispenser. This filter cartridge was specially designed for these situations. It protects the dispenser by reducing carbonate hardness, tackling the common problem of limescale head on. It also removes unwanted, taste-impairing substances. And its IntelliBypass® feature lets you control the degree of hardness – so you have just the right amount, for instance, for a perfect cup of tea.

PURITY C Dispenser filters are compatible with:

- VIVREAU ViTap*

Benefits of BRITA CLARITY Taste

		
Reduces fine particles such as sand	Reduces metals such as lead	Reduces carbonate hardness
		
Reduces chlorine taste and odour	Reduces organic impurities	

Filter capacity:
PURITY C300: 2,784

Adjustable water hardness
For great-tasting and great-looking hot drinks

Protects equipment
and therefore lowers dispenser maintenance costs



Post-filter
An extra layer of filtration for perfect results.

Activated carbon filtration
Reduces substances that impair taste and odour.

Ion exchanger
Reduces limescale and metals e.g. lead.

Pre-filter
Removes coarse particles.

PURITY C C300 Technical data



Model	BRITA PURITY C C300
Technology	decarbonisation
Capacity ¹ water dispensers (at a carbonate hardness of 10°dH/bypass setting of 40%)	2,784 l
Max. operating pressure	2 bar to max. 8.6 bar
Water intake temperature	4 - 30 °C
Nominal flow	60 l/h
Pressure loss at nominal flow	0.25 bar
Dimensions (W x H x D) Filter head with filter cartridge	125 x 119 x 466mm
Weight (dry/wet)	2.8/4.2 kg
Connections (input/output)	G 3/8" or John Guest 8 mm
Operating position	horizontal and vertical
Product number	
Filter cartridge (pack 1)	102826
Filter head 0 - 70 %, JG 8	1013636 (pack 1) 1013633 (Pack 20)
Accessories: BRITA FlowMeter 10 - 100	1033041
Accessories: Hardness test kit (carbonate)	710800

¹ The capacities given have been tested and calculated on the basis of normal application and machine conditions. Due to external influences (e.g. variations in raw water quality and/or machine type), deviations from these results can occur.

The food-grade quality and safety of BRITA water filter products are tested and verified by independent institutions



Product compliant with Reg.EC No 1935/2004

*applies to all materials that come into contact with water

Customisable BRITA bottles



Make your BRITA bottle your very own

Optional customised high-quality bottles are ideal for a variety of scenarios and are perfect for reinforcing your Brand.

The glass designer bottles come in a variety of sizes and styles, so you can find the right option for your organisation's needs.

Additionally, reusable bottles are a stand-out way to communicate your brand and commitment to the environment, it's something your employees, guests and patients will recognise and appreciate.





Customisable BRITA bottles

Make your BRITA bottle your very own

Optional customised high-quality bottles are ideal for a variety of scenarios and are perfect for reinforcing your Brand.

The glass designer bottles come in a variety of sizes and styles, so you can find the right option for your organisation's needs.

Additionally, reusable bottles are a stand-out way to communicate your brand and commitment to the environment, it's something your employees, guests and patients will recognise and appreciate.

Swing Bottle

Water type icons
still or sparkling



Hygienic swing stopper

Elegant design
for hospitality situations



Customisable area



BRITA Swing Bottle	
Sizes	425 / 750 ml
Material	Coated glass
Cap	<ul style="list-style-type: none"> • Colour: white/blue • Available with still or sparkling icons
Minimum order quantity	20 standard or customised BRITA Swing bottles
Customised print	Up to four colours (dishwasher safe)

Customisable BRITA bottles

Perfect all-rounders



Wave Bottle





Customisable cap
in two colours

Large bottle opening

Ideal everyday accompaniment for employees, patients and guests

Custom logo 360° printing



BRITA Wave Bottle	
Sizes	600 / 750 / 850 ml
Material	Coated glass (750 ml) / Durable plastic (600 / 850 ml)
Cap	<ul style="list-style-type: none"> • Colour: white or grey • Customisable print on cap, with or without still/sparkling icons
Minimum order quantity	<ul style="list-style-type: none"> • 12 standard BRITA Wave bottles • 60 customised BRITA Wave bottles
Customised print	Up to two colours (bottle and/or cap, dishwasher safe)

Twist Bottle





Water type icons
still or sparkling

Large bottle opening

Practical handling due to slightly curved shape



Customisable area



BRITA Twist Bottle	
Sizes	700 ml
Material	Coated glass
Cap	<ul style="list-style-type: none"> • Colour: grey • Available with still or sparkling icons
Minimum order quantity	20 standard or customised BRITA Twist bottles
Customised print	Up to four colours (dishwasher safe)

BRITA Accessories Technical data



BRITA-exclusive washing trays

1. Professional washing tray	<ul style="list-style-type: none"> • Size (W x H x D): 500 x 360 x 500 mm, 16 bottles • Compatible with: BRITA Swing 425 / 750 ml, BRITA Classic 750 / 1,000 ml • Openings custom-designed for the bottle neck
2. Professional washing tray incl. cap holder	<ul style="list-style-type: none"> • Size (W x H x D): 500 x 330 x 500 mm, 16 bottles • Compatible with: BRITA Twist 700 ml • Openings custom-designed for the bottle neck
3. Domestic washing tray	<ul style="list-style-type: none"> • Size (W x H x D): 485 x 180 x 485 mm, 25 bottles • Compatible with: all BRITA bottles (for BRITA Classic/Swing 750 ml and 1,000 ml it may be necessary to remove the top tray of the dishwasher) • Custom tines to hold the bottles, fits into the bottom tray of most domestic dishwashers



Further bottle cleaning equipment

1. Professional washing tray	<ul style="list-style-type: none"> • Size (W x H x D): 500 x 365 x 500 mm, 16 bottles • Compatible with: BRITA Swing 750 ml, BRITA Classic 750 / 1,000 ml
2. Professional washing tray	<ul style="list-style-type: none"> • Size (W x H x D): 500 x 295 x 500 mm, 25 bottles • Compatible with: BRITA Wave 600 / 750 / 850 ml, BRITA Twist 700 ml, BRITA Lounge 750 ml
3. Professional washing tray (small)	<ul style="list-style-type: none"> • Size (W x H x D): 400 x 280 x 400 mm, 16 bottles • Compatible with: BRITA Wave 600 / 750 / 850 ml, BRITA Twist 700 ml, BRITA Classic 500 ml
4. Professional washing tray	<ul style="list-style-type: none"> • Size (W x H x D): 500 x 325 x 500 mm, 25 bottles • Compatible with: BRITA Swing 425 ml, BRITA Classic 500 ml
5. Professional washing tray	<ul style="list-style-type: none"> • Size (W x H x D): 500 x 500 x 220 mm, 36 bottles • Compatible with BRITA Lounge 350 ml



Storage crates

6-bottle crate	<ul style="list-style-type: none"> • Solid storage crate, stackable • Size (W x H x D): 300 x 380 x 200 mm, 6 bottles • Compatible with: BRITA Swing 750 ml, BRITA Twist 700 ml, BRITA Classic 750 / 1,000 ml, BRITA Lounge 350 / 750 ml
----------------	---



Tamper seals

Still: 1015694 Sparkling: 1015695	<ul style="list-style-type: none"> • 1000 stickers per roll • Size (L x W) 170 x 200 mm • Compatible with BRITA Swing bottles
--------------------------------------	--

Vitap Installation Requirements

- The water dispenser may not be installed near direct or indirect heat sources (such as ovens, radiators, heaters, dishwashers, washing machines and so forth). Likewise, hoses and cables must not come into contact with heat sources.
- The water dispenser must be placed on a level surface that can bear the weight and is resistant to liquids and heat.
- The water dispenser may not be installed at locations where there is a possibility of sprayed water or jets of water.
- No objects may be placed on the water dispenser.
- There must be no explosive, corrosive or abrasive environment condition. Keep the water dispenser away from flammable objects.
- The water dispenser must not be subject to agitations and vibrations.
- The water dispenser is not suited for outdoor use.
- The water dispenser has to be installed in locations which have free access and can be monitored by trained personnel.
- The ambient temperature around the dispenser should not exceed 32°C.

1 Water connection:

A corresponding and functioning drinking water connection must be in the vicinity (to be provided by operator):

- 3/4" male angle valve or 3/4" male isolation valve terminated in a vertical position, preferably in stainless steel with shut-off valve in the cabinet underneath. The material of this valve may also be chrome plastic or brass in accordance with local legal requirements.
- No more than 1 meter left or right of the drinking water system.
- Water supply flow pressure min 2.5 bar.
- The water dispenser may only be connected to drinking water lines that supply the drinking water in a quality in accordance with the drinking water regulations at the location of use.

2 Electrical connection:

UK: 1 twin switch socket 230 V / 13 A
Europe & Australia:

- 1 switch socket 230 V /10 A (with "Cooler-carbonator" labelling)
- 1 switch socket 230 V /16 A (with "Boiler" labelling) in base cupboard unit at high level, no more than 1 meter either left or right of the system.

3 Waste water connection:

Waste connection, trapped up stand to facilitate a 1/2" flexible pipe (to be provided by operator).

4 CO₂:

Foodgrade CO₂ bottle type E290 is to be provided by the operator (2 kg, 6 kg or short 10 kg).

The spatial volume of the installation room must be known. The max. permissible size of the CO₂ bottle is calculated from this. Contact customer service with questions about the CO₂ bottle size. The CO₂ bottle must be placed as far as possible from any heat sources and the ambient temperature should not exceed 32° C.

NOTE: Points 1-3 need to be within 1m of appliance

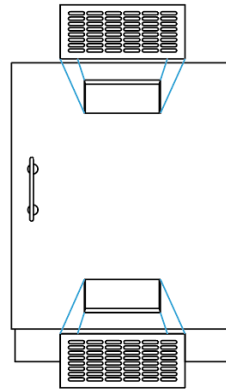
Vitap Ventilation Requirements

The ventilation areas in the cabinet have to be prepared by the operator prior to the installation. Ventilation grilles are available on request as accessories. Please contact your customer service for more details.

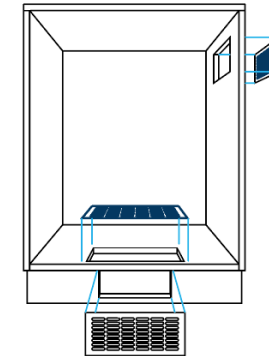
The cabinet may be ventilated in several different ways to prevent excessive heat build-up. The methods shown all take advantage of natural circulation by placing two grilles or cut-outs; one near the base and the other at the top of the enclosure.

Base/ kitchen cabinet cabinet back panel should be removed for better ventilation.

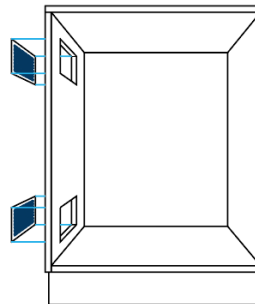
Front view



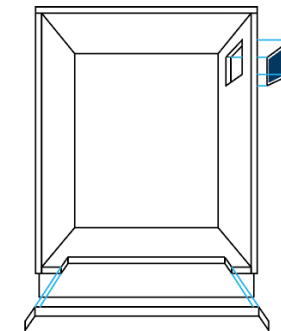
Front Ventilation
Cut ventilation grilles into a standard door panel.



Base Ventilation
Cut ventilation grilles into the cabinet's base panel and base plinth. Top ventilation will also be required in either the side panels or a cut out in the top of the door.



Side Ventilation
Cut ventilation grilles into the side of a standard 600 mm cabinet. The grilles may be fitted on either side allowing the ventilation into a free and unobstructed area.



Base Cut-Out
Ensure ventilation by removing a narrow section of the floor, immediately behind the door and trim with roll edging strip. Typical cut-out size must be not less than 280 mm wide x 35 mm deep.

Vitap Preparation and Arrangement

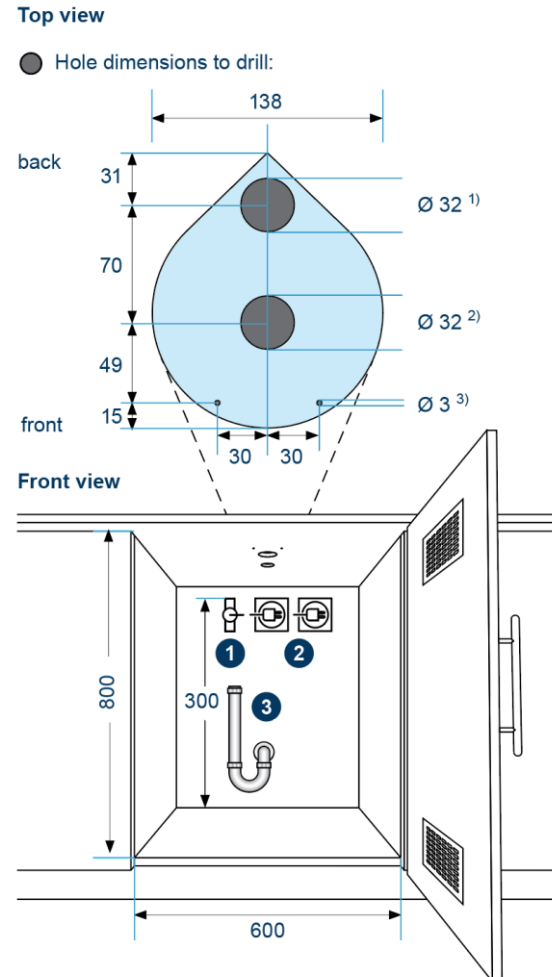
Preparation

Preparation of the furniture for installation.

Ventilation requirements:

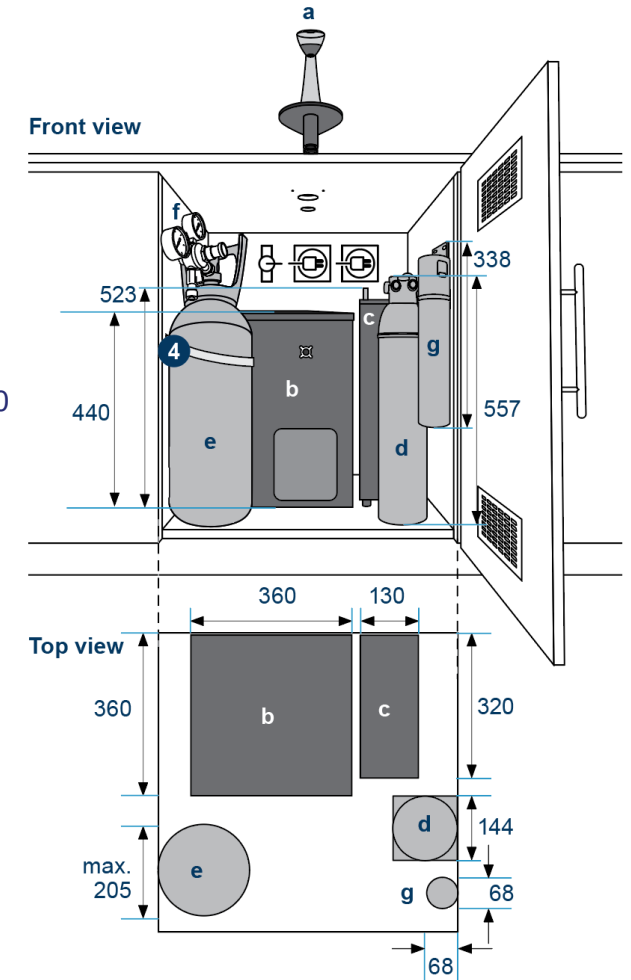
The water dispenser must be installed in such a manner that there is sufficient ventilation.

Never cover or block ventilation slits and cooling fins.



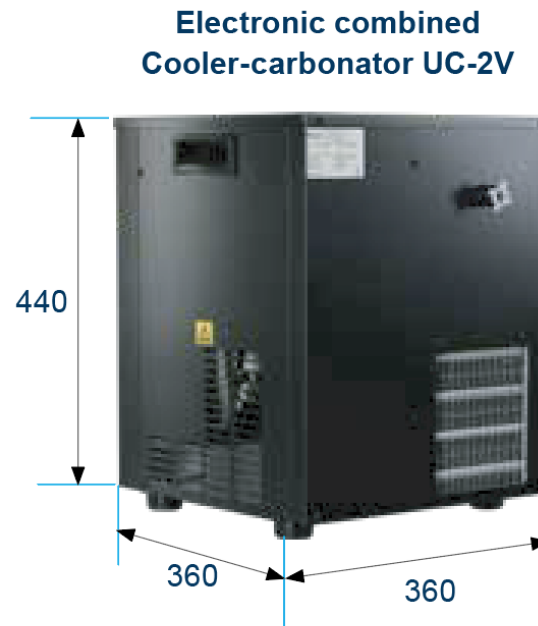
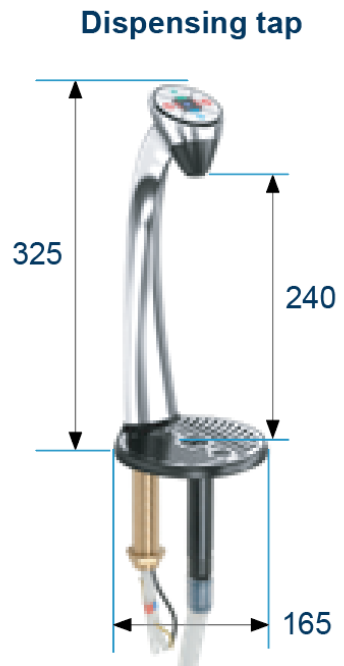
Arrangement

- Dispensing tap “Still”, “Sparkling” and “Hot”
- Cooler-carbonator
- Boiler
- Hot water filter: PURITY C500 Dispenser
- CO₂ bottle
- CO₂ pressure regulator
- Cold water filter: CLARITY Taste 100



All dimensions in mm.

Vitap Dimensions



All dimensions in mm.



For rental or sales enquires contact:

Tel: 1300 955 021 (Australia) | Tel: 0800 482 008 (New Zealand)

professional@brita.com.au | www.brita.com.au

